

ActEarly

 | a City Collaboratory approach to early promotion of good health and Wellbeing

Early life changes to improve a child's future

Intervening positively in early life can improve the health and opportunities of the next generation. **Prevention is key.**

What actions will have the biggest impacts?

The ActEarly Research Consortium was established in 2019. ActEarly aimed to better understand how upstream early life interventions can improve the health and opportunities for children living in poverty.

Since 2019 ActEarly investigated two areas. Both with high levels of child poverty.

- **Bradford, Yorkshire**
- **Tower Hamlets, London**

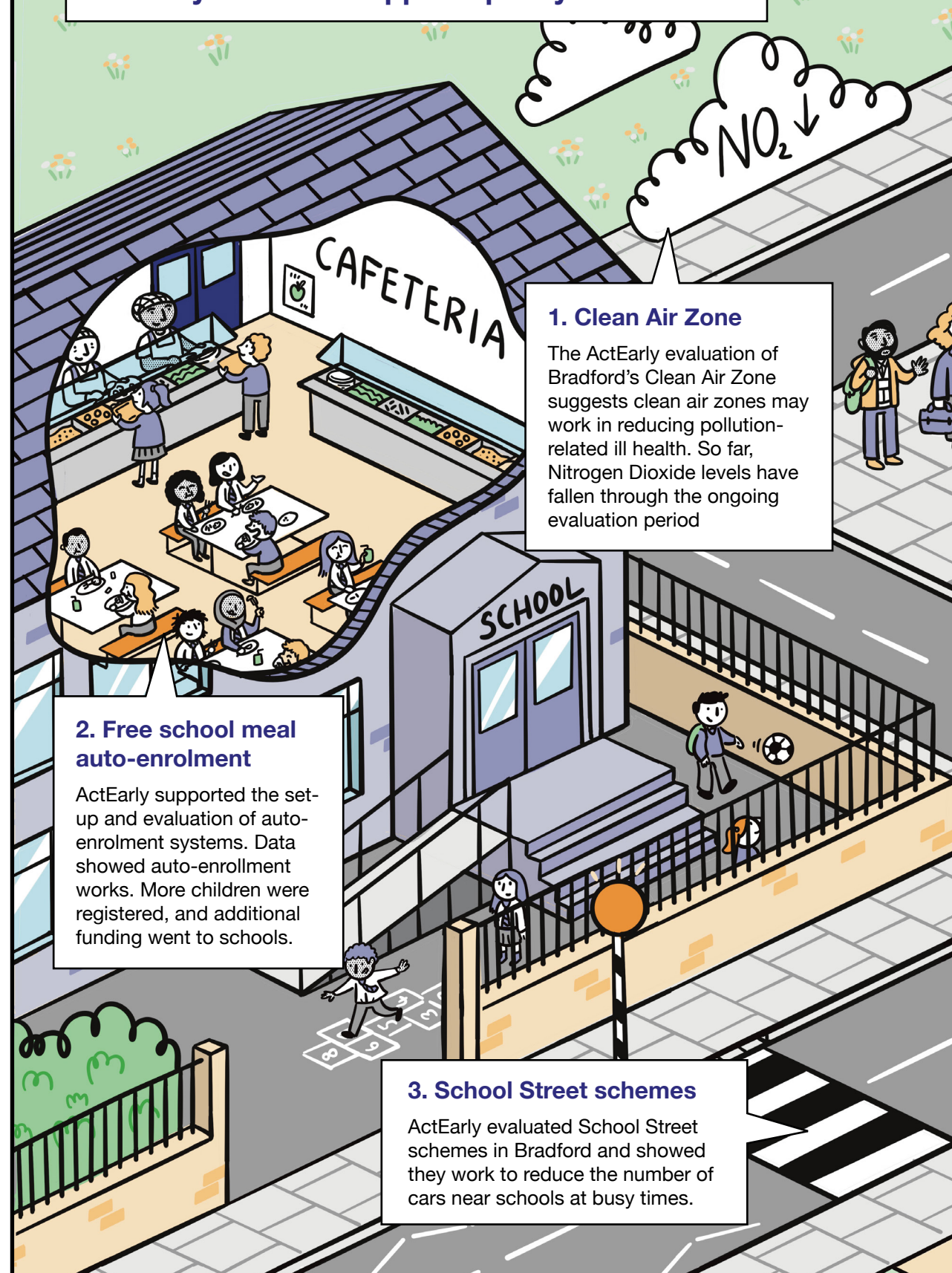
Find out more

Read about ActEarly research outputs on our **website**.

We have secured funding to continue some of our work after ActEarly has ended.

Get in touch to work with us.

ActEarly evidence supports policy intervention



1. Clean Air Zone

The ActEarly evaluation of Bradford's Clean Air Zone suggests clean air zones may work in reducing pollution-related ill health. So far, Nitrogen Dioxide levels have fallen through the ongoing evaluation period

2. Free school meal auto-enrolment

ActEarly supported the set-up and evaluation of auto-enrolment systems. Data showed auto-enrollment works. More children were registered, and additional funding went to schools.

3. School Street schemes

ActEarly evaluated School Street schemes in Bradford and showed they work to reduce the number of cars near schools at busy times.

ActEarly demonstrates how to conduct future research

1. A whole system approach is vital

ActEarly established a research consortium that united broad interdisciplinary expertise to develop shared understanding and priorities. This approach allows wider determinants of health research to be explored.

2. Build research capacity in local government

Developing research active local authorities (LAs) is key. ActEarly has helped its 2 local authorities secure funding so that they can deliver their own research.

3. Co-produce research with the public and those likely to implement the intervention

ActEarly conducted genuine and creative co-produced research. Read the **ActEarly Co-production Strategy**.